

2018 FLEETWOOD STORM

STORM

2018 FLEETWOOD
CLASS A GAS



 **FLEETWOOD RV**
REVGROUP

STORM

Fleetwood has created the perfect storm, combining the efficient size of a Class C motorhome with the amenities of a Class A motor coach. The 2017 Storm, one of Fleetwood's mid-priced Class A gas motorhomes, features residential refrigerators, 40" flat screen LED TVs and manual day/night roller shades throughout the amenity-packed floorplans. Whether you're looking for a soft-touch dream dinette, a bunk bed design or one-and-a-half baths, the Storm delivers a whirlwind of residential touches.

TOP FEATURES

- (2) Roof Mount High Efficiency Ducted 13,500 BTU Air Conditioner w/Chill Grille
- Auto Generator Start
- Exterior Kitchenette w/Mini Fridge, Microwave, Cabinet Storage, & Pull Out Surface (36D)
- Hide-A-Loft™ Drop-Down Queen Bed
- Manual Day/Night Roller Shades Throughout
- Side-View Cameras
- 40" Flat Screen LED TV (Living Area)
- Residential Refrigerator
- 50-amp Electrical Service & Power Cord w/1,200 watt Inverter (32A & 34S)
- 50-amp Electrical Service & Power Cord w/2,000 watt Inverter (36D & 36F)



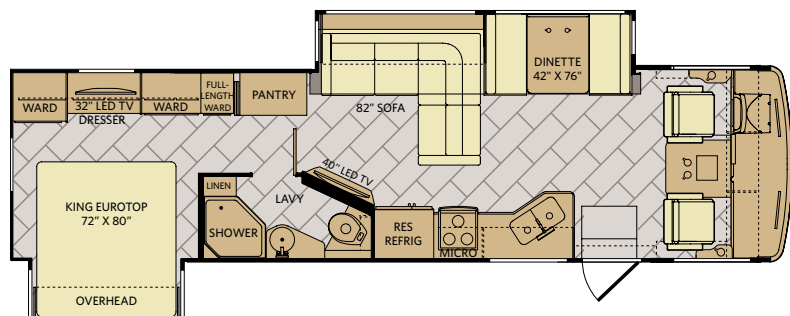
The Storm 36D is shown in Silver Lining décor and High Gloss Nottingham Cherry cabinetry.



FLOORPLANS & EXTERIOR OPTIONS

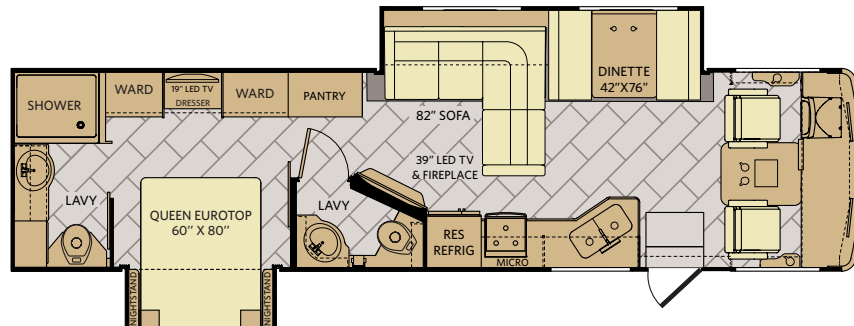
32A

Options: 105, 113, 126, 186



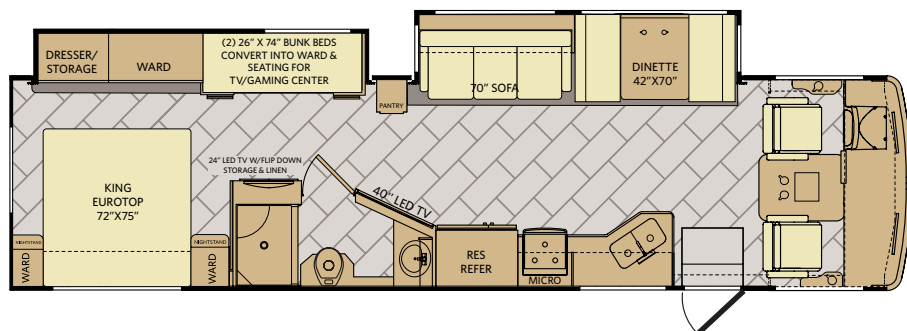
34S

Options: 105, 113, 126, 186



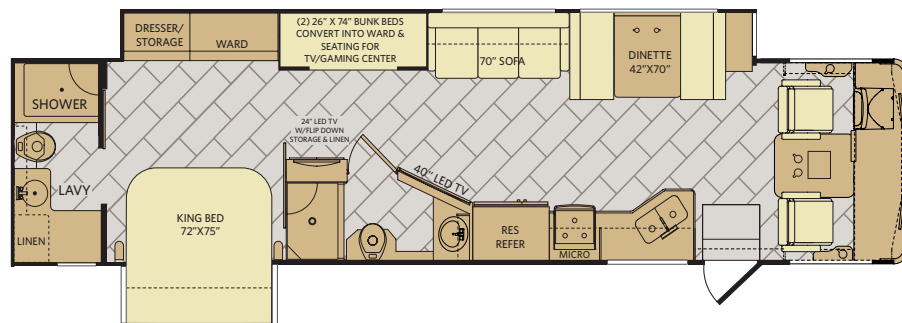
36D

Options: 113, 186



36F

Options: 113, 126, 186



Available Options



OPT. 105
2-DOOR REFRIG
W/ICEMAKER



OPT. 113
3-BURNER COOKTOP
W/OVEN

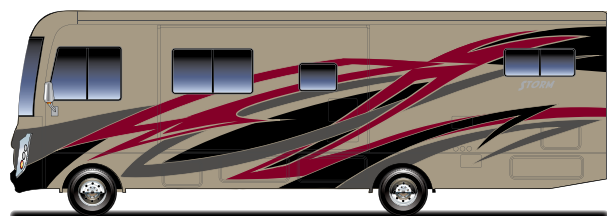


OPT. 126
WASHER/DRYER



OPT. 186
DRIVER/PASSENGER
PEDESTAL TABLE

Coastal



Graphite



Superior



DÉCOR OPTIONS

High Gloss Autumn Wheat



High Gloss Nottingham Cherry



Bedford Chocolate



Sequoia



Silver Lining



1 Sofa 2 Accent 3 Bedspread 4 Countertop 5 Flooring 6 Carpet

STANDARDS & OPTIONS

INTERIOR THROUGHOUT

- 12V Water Pump, On Demand
- 12V USB Charging Outlets Throughout
- (2) 13,500 Btu/h Ducted Air Conditioner w/Chill Grill
- (2) 20,000/30,000 Btu/h Furnace (34S, 36F)
- 34,000 Btu/h Single Furnace (32A)
- 34,000/20,000 Btu/h Single Furnace (36D)
- (4) 6V Deep-Cycle House Batteries
- 10-Gallon Quick Recovery Water Heater w/Direct Spark Ignition (Gas/Electric)
- 1200W Inverter w/60 AMP Power Converter (32A & 34S)
- 2000W Inverter w/100 AMP Power Converter (36D & 36F)
- AC/DC Load Center
- Accent Panel w/Chair Rail (Select Models)
- Auxiliary Batteries w/Disconnect Switch
- Energy Efficient LED 3" Puck Flush Mount Ceiling Lighting
- Dedicated Full-Length, Metallic A/C Ducting
- Deluxe Roller Bearing, Full Extension Drawer Guides & Transit-Ship Locks
- Fantastic® Power Vent w/Wall Switch (Multiple Locations)
- Interior Soft-Touch Vinyl Ceiling w/Ducted Air
- Generator Auto Changeover
- Hardwood Crown Molding Throughout
- Hardwood Raised Panel Cabinet Doors
- Upper & Lower w/Hidden Hinges
- Hide-A-Loft™ Drop Down Queen Bed
- Manual Day/Night Double Black Roller Shades
- Ozite Lined Shelves in Overhead Cabinets
- Polished Solid Surface Countertops
- Single Location Monitor Panel w/LPG Battery Disconnect Switches, Tank Level & Battery Readout
- Tuff-Pex™ Plumbing System
- Whole Coach Water Filtration System
- Water Heater Bypass Valve
- Fresh Water System Winterization
- Water Pump w/On/Off Switches at Monitor Panel & Lavy
- Hardwood Drawers
- Vinyl Flooring
- OPTIONS**
- CSA Package (Canadian Specs)**
- Satellite Radio (Subscription Required)
- On Demand Water Heater

DRIVER CONVENIENCE

- 110-Volt AC Outlet at Passenger Area
- 12V & USB Accessory Ports
- Auto Generator Start Switch
- Auxiliary Emergency Start Assist Switch on Dash
- Co-Pilot Integrated Dash Workstation
- Dash Radio - 6" Jensen Touch Screen & Premium Sound System w/AM/FM/CD/DVD/Bluetooth Including USB & Aux Inputs
- Driver Chair - Soft Touch w/Reclining Back, Swivel & 6-Way Power Controls - Lexington
- Passenger Chair - Soft Touch w/Reclining Back, & Swivel - Lexington
- Driver Side Console w/Integrated Magazine Rack & Solid Surface Top
- Driver/Passenger Cup Holders
- Driver/Passenger Reading Light
- Driver/Passenger Sun Visors, Power & Manual Day/Night Black Roller Shades
- Electronic Cruise Control
- High Output Dash Heat & Air Conditioning
- Intense Halogen Projector Headlamps
- Passenger Armrest w/Integrated Magazine Rack, Cup Holder & Solid Surface Top
- Power Heated Mirrors w/Remote Switch
- Radio Switch Main/Auxiliary Power
- Rear Vision Cameras Mounted into Rearview Mirrors
- Seat Belts - 3 Point Driver & Passenger w/Adjustable Straps
- Steering Wheel w/Tilt
- Windshield Wipers w/Delay
- OPTIONS**
- Driver/Passenger Pedestal Table
- Premium Radio Upgrade

LIVING ROOM

- 40" Flat Screen LED TV (Living Area)
- L-Sofa w/Footrest & Air Bed (32A, 34S)
- Sofa - Soft Touch Lexington Jack Knife Sleeper - Lexington (36D, 36F)
- Soft Touch Dream Dinette w/Large Drawers
- Electric Fireplace

GALLEY

- 1000W Stainless Steel Convection Microwave Oven w/Electronic Touch Pad
- Adjustable Shelves Throughout Kitchen
- Deep Double Bowl Under-Mount Stainless Steel Sink
- Glass Tile Backsplash
- Polished Solid Surface Countertops,
- Sink & Stove Top Covers
- Power Ceiling Vent Fan
- Refrigerator - 11 cu. ft. Residential Stainless Steel (32A, 34S)
- Refrigerator - 18 cu. ft. Residential Stainless Steel w/2000W Pure Sine Inverter w/Remote (36D, 36F)

GALLEY CONTINUED

- Residential Single Handle Satin Nickel Faucet w/Pullout Sprayer
- Satin Nickel Finish Cabinet Hardware
- Sink Cover/Cutting Board
- Slide-Out Dinette Bins w/Latches
- Toe Kick at bottom of Cabinets
- Waste Basket

BEDROOM

- 24" Flat Screen LED TV w/ Remote DVD/Game System Connections (Bunk Area - 36D, 36F)
- 32" Flat Screen LED Bedroom TV w/ Connections To Add Satellite Receiver and DVD (36F)
- Bedsread w/Integrated Shams & Accent Pillows
- Bunk Bed Bedsreads and Privacy Curtains (36D, 36F)
- Bunk Beds w/5" Foam Mattress (36D, 36F)
- Designer Headboard
- King Size Dream Easy Mattress (32A, 36D, 36F)
- Lift Up Bed w/Under Bed Storage
- Queen Size Dream Easy Mattress (34S)
- Reading Lights in Bed Overhead Cabinet
- Remote Generator Start Switch
- Solid Surface Nightstand Tops
- OPTIONS**
- Washer & Dryer Combo (32A, 34S, 36F)

BATHROOM

- Accessories: Satin Nickel Towel Bar & Toilet Paper
- Bath Door w/Residential Passage Lock
- Deluxe Hardwood Medicine Cabinet w/Mirror
- Fiberglass Shower
- Glass Shower Door - Rain Glass
- Metal Shower Head w/On/Off, Sliding Adjustable Bar, Soap Dish & Matching Dual Valve Faucet
- Residential Brushed Nickel Single Handle Faucet w/Large Sink
- Residential Porcelain and/or Stainless Steel Lavy Sink
- Residential Water Saver & Vacu-Flush Porcelain Toilet
- Shower Skylight/Roof Vent w/12V Fan
- Window Treatment (Select Models)

SAFETY/CONVENIENCE

- 10 lb. ABC Fire Extinguisher
- Battery Access Entry Step Cover
- Battery Disconnect
- Carbon Monoxide, Smoke, & Propane Detector/Alarm
- Egress Windows
- Entry Door Manual Roller Shades
- Exterior & Interior Entry Assist Handle
- GFI Circuit Protection
- Master Light Switch at Entry For All Storage Compartments
- Multiple Seatbelt Locations
- Solid Surface Entry Step w/ABS Sides

EXTERIOR THROUGHOUT

- 4-Color Premier Full-Body Paint w/ Front Clear Protective Mask
- 4-Point Automatic Levelers
- ABS Wheel Well Skirts
- Antenna - Unidirectional King Controls Jack Antenna
- Automotive Style Soft Dash
- Automotive Style Windshield Wiper System
- Awning - Single Wall Mounted Legless Patio Awning w/LED Lighting & Wind Sensor Retract
- Awning - Slide Out Toppers Above All Slide Outs
- (4) 6V Deep Cycle House Batteries
- Black Instrument Gages w/Electronic Information Center
- Black Water Tank Flush
- Corrosion Resistant Steel Luggage Door Hinges
- Deadbolt Lock & Frameless Window
- Door Side Area Patio Light
- Driver Side Area Patio Light Above Service Center
- Exterior Kitchenette w/Mini Fridge, Microwave, Cabinet Storage, and Pull Out Counter Surface (36D)
- Exterior Wall Mounted Entertainment Center - w/32" LED TV, AM/FM/CD/DVD Radio
- Exterior Lighted Power Entry Step
- Exterior Service Station - Including Water Pump Switch, Exterior Shower, Black Tank Flush, City Water Hookup & Drainage Valves
- Fiberglass Aerodynamic Front Cap w/ Automotive Head Lighting & Hood Insert
- Fiberglass Rear Cap w/Automotive Lighting

EXTERIOR THROUGHOUT CONTINUED

- Formed Grille & Air Intake
- Front/Rear Clearance & Marker Lighting
- Front/Rear Mud Flaps
- Gravity Water Fill
- Hitch - Capacity of 5,000# w/7-Way Round Tow Connection
- Intense Halogen Projector Headlamps w/LED Accents
- Large Lighted Roto-Molded Polyethylene Compartments
- One Piece TPO Domed Roof
- Prep for Roof-Mounting Satellite Dish
- Rear Ladder - Brushed Aluminum Color
- Side-Swing, Insulated Aluminum Luggage Doors w/Single Paddle Latch
- Tinted Slider Driver/Passenger Windows
- Under-hood Utility Light
- 12V 3GPM High Capacity Shurflo Water Pump
- Large Dark Tinted Frameless Single
- Pane Windows
- OPTIONS**
- DSS Auto-Locating Stationary Satellite Dish - Wineguard
- Neutral Loss Protection
- On Demand Water Heater
- Large Dark Tinted Frameless Dual Pane Windows Throughout
- King Stationary Satellite System
- Roof Vent Rain Cover

SAFETY/CONVENIENCE

- 50 Amp Electrical Service & 30' Power Cord
- AC Duplex GFI Receptacle on Patio Side
- Acrylic Grab Handle at Entry Door
- Amber Porch Light w/Interior Switch
- Automatic Hydraulic Leveling Jacks
- Automotive Safety Glass
- Daytime Running Lights
- Entry Door w/Screen Door & Deadbolt Lock
- High Mounted Large LED Taillights
- Power Electric Step

STORAGE

- Molded Cross Link Polyethylene Battery Compartment w/Lid
- Pass Through Storage
- Rotocast Molded Storage Boxes
- Slam Latch Luggage Doors

BODY STRUCTURE

- Aluminum Bus-Style Side Swing Luggage Doors
- Basement Storage Lighting w/Individual Switches and Master Switch Inside Entry
- Corrosion Resistant Aluminum Tube Hull Framing
- Dryseal™ Edge Coating Water-Wicking Wall Edge Coating
- Electric Main/Bedroom Wardrobe/Kitchen Slide Out Systems
- F-21 Construction & Manufacturing Technology
- Full Coverage Heavy Duty Undercoating
- Heated Fresh Water & Holding Tank Compartments
- Steel Constructed Entry Step Box
- Power Platform® Construction
- Powerframes™ Precision, Welded Aluminum Interlocking Frames
- Powerlock System™ (Interlocking Floors, Walls, & Ceiling)
- Radiused Entry Door
- Raised Space Frame Foundation
- Rotational Molded Easy To Clean Service Compartment
- Solid Bead-Foam Engineered Fit Insulation™
- Vacu-Bond™ Aluminum Framed Sidewalls, Roof and Floor Construction

WEIGHTS & MEASUREMENTS

CHASSIS

MODEL	32A	34S	36D	36F
Wheelbase (inches)	208"	228"	228"	242"
Front GAWR (lbs) ²	8,000	8,000	8,000	8,000
Rear GAWR (lbs) ²	15,000	15,000	15,000	15,000
GCWR (lbs) ³	26,000	26,000	26,000	26,000
Hitch Rating Weight(lbs) [†]	5,000	5,000	5,000	5,000
Tongue Weight (lbs) [*]	500	500	500	500
Fuel Capacity (gal)	80	80	80	80

FORD® CHASSIS

Model: Ford

Engine: 6.8L Triton V10

Transmission: Ford 6-Speed Automatic w/Overdrive

Alternator: 175 Amp

Torque: 460 lb.-ft. @ 3,000 RPM

Horsepower: 320 HP @ 3,900 RPM

DIMENSIONS AND CAPACITIES

MODEL	32A	34S	36D	36F
Overall Length (inches) ⁴	34' 8"	36' 2"	36' 2"	38' 8"
Overall Height (with A/C)	12'	12'	12'	12'
Overall Width (maximum) ^{5,6}	102"	102"	102"	102"
Interior Height (maximum)	82"	82"	82"	82"
Interior Width (maximum)	96"	96"	96"	96"
Patio Awning Width (feet & inches)	18'	18'	18'	18'
Interior Storage (cu. ft.)	142	150	204	171
Exterior Storage (cu. ft.)	151	160	106	139
Fresh Water Holding Tank (gal)	60	60	60	60
Grey Water Holding Tank (gal)	37	37	37	80
Black Water Holding Tank (gal)	37	37	37	37
Appliance Propane Tank (gal) (WC) ⁷	25	25	25	14
Water Heater Tank (gal)	10	10	10	10



21 REASONS WHY FLEETWOOD IS AMERICA'S FAVORITE

Mile after mile, decade after decade, more families trust Fleetwood. The open road is our proof. With more Fleetwood motorhomes on the road today than any other manufacturer*, our brand prides itself on building dependable products that help families reconnect one journey at a time — over and over again. At Fleetwood, we constantly redefine value because understanding your every need is just the start to delivering peace-of-mind at every turn.

F-21 Advantage: Fleetwood 21st century engineering, manufacturing, and materials

Fleetwood RV offers a 21st century, industry-leading advantage—a quality construction approach to motorhome engineering, manufacturing and materials. The “F” stands for Fleetwood RV. The “21” stands for 21st century materials and construction techniques. F-21 is demonstrated by 21 key proof points that deliver unique advantages to Fleetwood owners and illustrate the quality for which Fleetwood RV is known industry-wide.

*Based on IHS Automotive, Polk Recreational Vehicles in Operation (RVIO) as of 7/1/13.



REV GROUP

YOUR LOCAL DEALER



REV GROUP

Fleetwood RV is part of REV Recreation Group, a division of REV Group, Inc., a family of 26 industry-leading motor vehicle brands. At REV Group, we innovate, design and build products that connect and protect thousands of people every day—our trusted vehicles are engineered with the utmost rigor and precision to deliver the highest levels of performance, reliability, durability and safety.

DISCLAIMERS

1. GVWR (Gross Vehicle Weight Rating) is the maximum permissible weight of this fully loaded motor home. The GVWR is equal to or greater than the sum of the (UVW) unloaded vehicle weight plus the (OCCC) occupant cargo-carrying capacity.
 2. GAWR (Gross Axle Weight Rating) is the maximum permissible loaded weight a specific axle is designed to carry.
 3. GCWR (Gross Combined Weight Rating) is the value specified by the motor home manufacturer as the maximum allowable loaded weight of this motor home with its towed vehicle. Towing and braking capacities may be different. Refer to Fleetwood and chassis manufacturer's manuals for complete information.
 4. Length measured from front bumper to rear bumper (excludes accessories).
 5. Excludes safety equipment and awnings.
 6. Motor homes feature a body width over 96" which will restrict your access to certain roads. Before purchasing, you should research any state and/or province road laws which may affect your usage.
 7. Tank manufacturer's listed water capacity (WC). Actual propane capacity is 80% of water listing as required by the safety code.
- † The chassis manufacturer recommends the installation of a supplemental brake control system to activate the brakes on the vehicle or trailer you are towing. Hitch receiver ratings expressed are maximum for the hitch receiver installed and may require the purchase of additional equipment that is dependent on the weight of the towed load. Consult with hitch receiver manufacturer for further information.
- * UVW and OCCC are found on the label containing the federal certification tag in each RV.
- ** Seatbelts and locations are shown in the brochure for display purposes only. Actual numbers and locations will vary by model.
- *** All 2018 REV Recreation Group motorhomes include a limited one year/15,000-mile coach warranty and three-year/45,000-mile structural warranty, whichever occurs first, and is fully transferable for the first 12 months.

FLEETWOOD MOTORHOME ASSOCIATION

As a Fleetwood RV owner, you're invited to become a member of the Fleetwood Motorhome Association (FMA). Becoming a member is the perfect way to meet other Fleetwood owners who love to travel across America and share in the RV lifestyle. Visit the FMA website at www.fma4fun.org to learn more and join the fun.

CONTACT US

To locate a dealer near you, visit our website at www.fleetwoodrv.com or call 1-800-322-8216. We can also be contacted at Fleetwood RV Customer Relations, P.O. Box 1007, Decatur, IN 46733.

IMPORTANT—PLEASE READ: Product information, photography and illustrations included in this publication were as accurate as possible at the time of printing. For further product information and changes, please visit our website at www.fleetwoodrv.com or contact your local Fleetwood RV dealer. Prices, materials, design and specifications are subject to change without notice. All weights, fuel, liquid capacities and dimensions are approximate. Fleetwood RV has designed its recreational vehicles to provide a variety of uses for its customers. Each vehicle features optimal seating, sleeping, storage and fluid capacities. The user is responsible for selecting the proper combination of loads (i.e., occupants, equipment, fluids, cargo, etc.) to ensure that the vehicle's capacities are not exceeded.

www.fleetwoodrv.com

©2017 REV Group, Inc. Printed in the USA. Inventory Control Number STORM18B1, 06/17. Model Year 2018, First Edition.